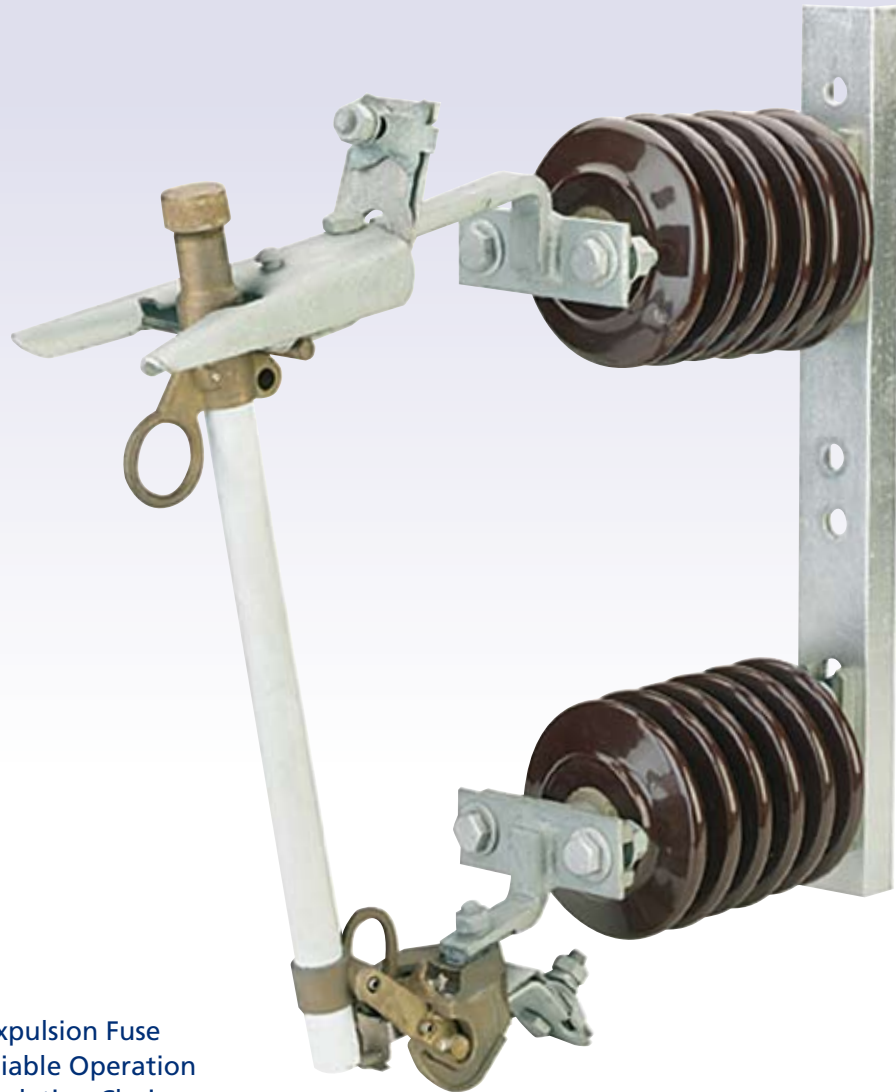


Re-wireable Fused Cutouts Beta Type



ENGINEERING BRILLIANT SOLUTIONS

Features:

Drop-out Expulsion Fuse
Rugged Reliable Operation
Variable Insulation Choice

Specification:

Tested to International Standards

Voltage Range :- 12kV, 24kV, 36kV
Fuse Rating :- Up To 100 Amps

Lucy Switchgear
Howland Road, Thame,
Oxfordshire OX9 3UJ, United Kingdom

tel: +44 (0)1844 267267 fax: +44 (0)1844 267223
email: sales@lucyswitchgear.com

Unit 14, Thorpe Lane, Thorpe Way Industrial Estate
Banbury, Oxfordshire OX16 4UT, United Kingdom

tel: +44 (0)1295 270448 fax: +44 (0)1295 270446
email: sales@lucyswitchgear.com

Lucy Middle East
PO Box 17335, Jebel Ali, Dubai, United Arab Emirates
tel: +9714 812 9999 fax: +9714 812 9900
email: sales@lucyme.ae

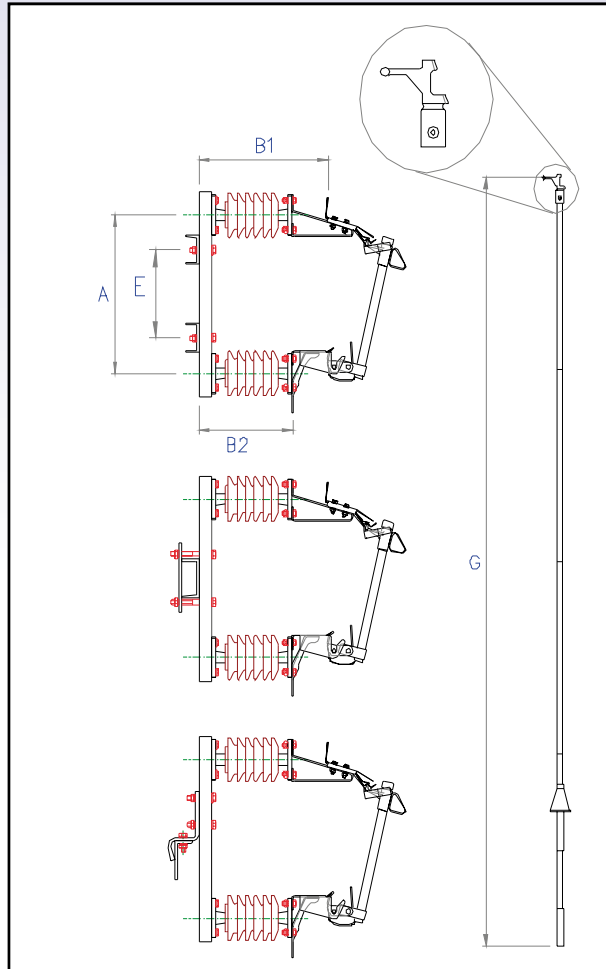
The Saudi Lucy Company Ltd
PO Box 834, Al-Khobar, 31952, Saudi Arabia
tel: +966 3 8823057 fax: +966 3 8822553
email: info@saudilucy.com

12kV, 24kV & 36kV Fused Cutouts

The fused cutout is a rewirable dropout expulsion fuse. This unit provides a reliable and economic protection of distribution lines and transformers together with a visual indication of operation and positive disconnection from supply. Each single phase fuse unit can be attended from ground level with a multi-sectional permaglass portable operating pole, these poles are available in a variety of lengths to suit.

Features:

- Fuse assembly with rewirable fuse link: Rating available (type K or T) 1,2,3,5,10,15,20, 25,30,40,50,60,75 &100 amps.
- A spring loaded flipper and locking mechanism at the lower end of the fuse carrier ensures consistent tension on the fuse link and prevents element damage during "close in".
- The expendable cap design provides double venting during high fault current interruptions and single venting under low fault conditions.
- Galvanised steel phase channel bases.
- Connector terminals suitable for conductor sizes ranging from 4mm to 10mm diameter.
- Hook Stick operating mechanism.
- Variable Insulation.



ENGINEERING BRILLIANT SOLUTIONS

Options:

- Mounting arrangements designed to suit customer requirements (as shown).
- All phase trip mechanism.
- Main Contact Dust Shield.
- Additional lower terminal clamp for conductors from 35mm² to 150mm².
- Earthing Spigot.
- Reflectorised red cartridge sticker.

Pole Accessories:

- Rubber rain shield.
- Earth chain.
- Carrying bag.

		A	B1	B2	C	E	G	H
Rated Voltage	Impulse Withstand Test	*Post Centres	*Terminal Pad Height	*Terminal Pad Height	*Total Isolating Distance	Base Fixing Centres	Pole Length	Mounting Height
12kV	130kV	290	376	287	250	As required	As required	As required
24kV	250kV	585	585	410	340	As required	As required	As required
36kV	250kV	660	770	410	410	As required	As required	As required

* Subject to Insulation creepage

All dimensions in millimeters